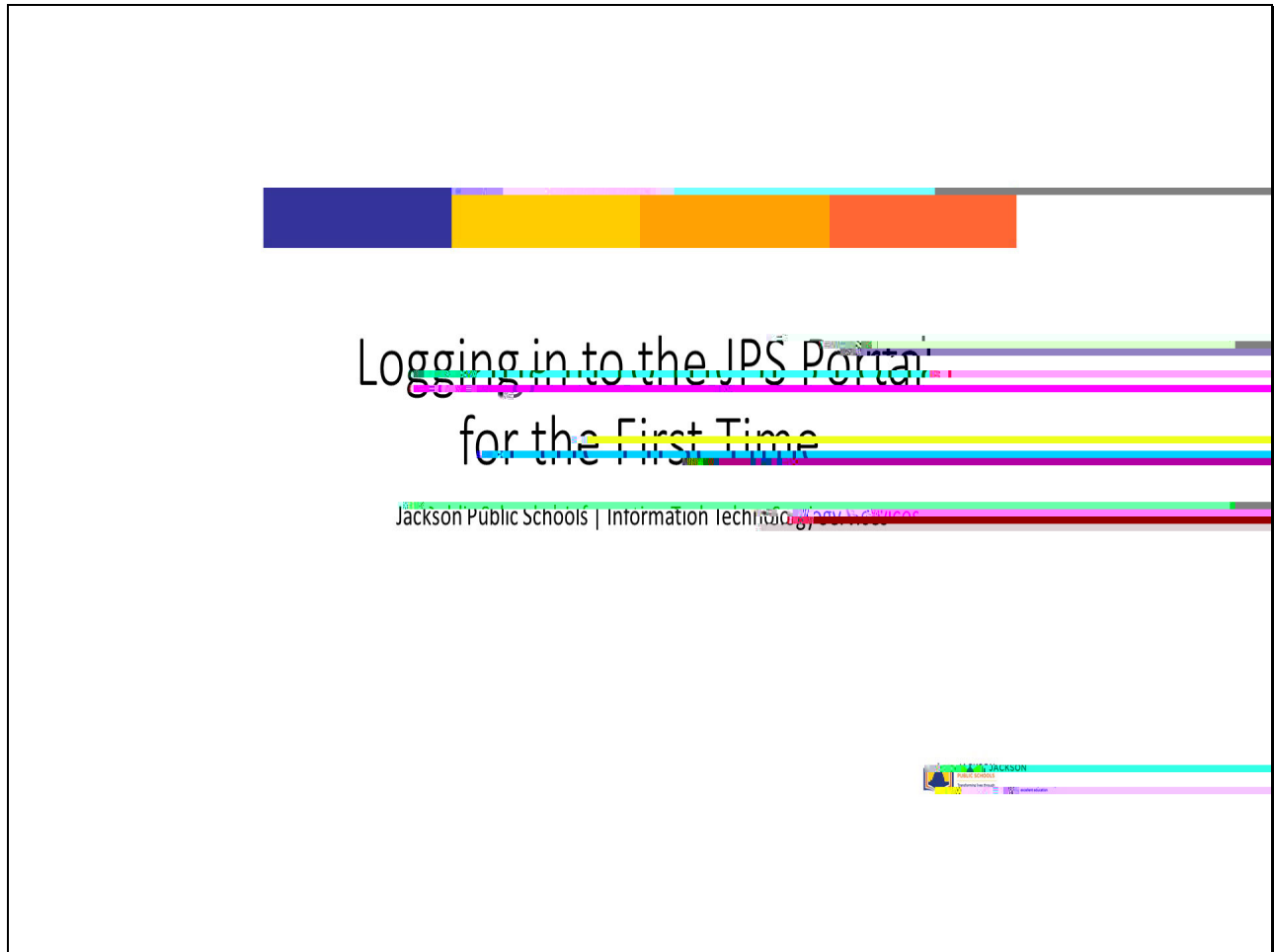
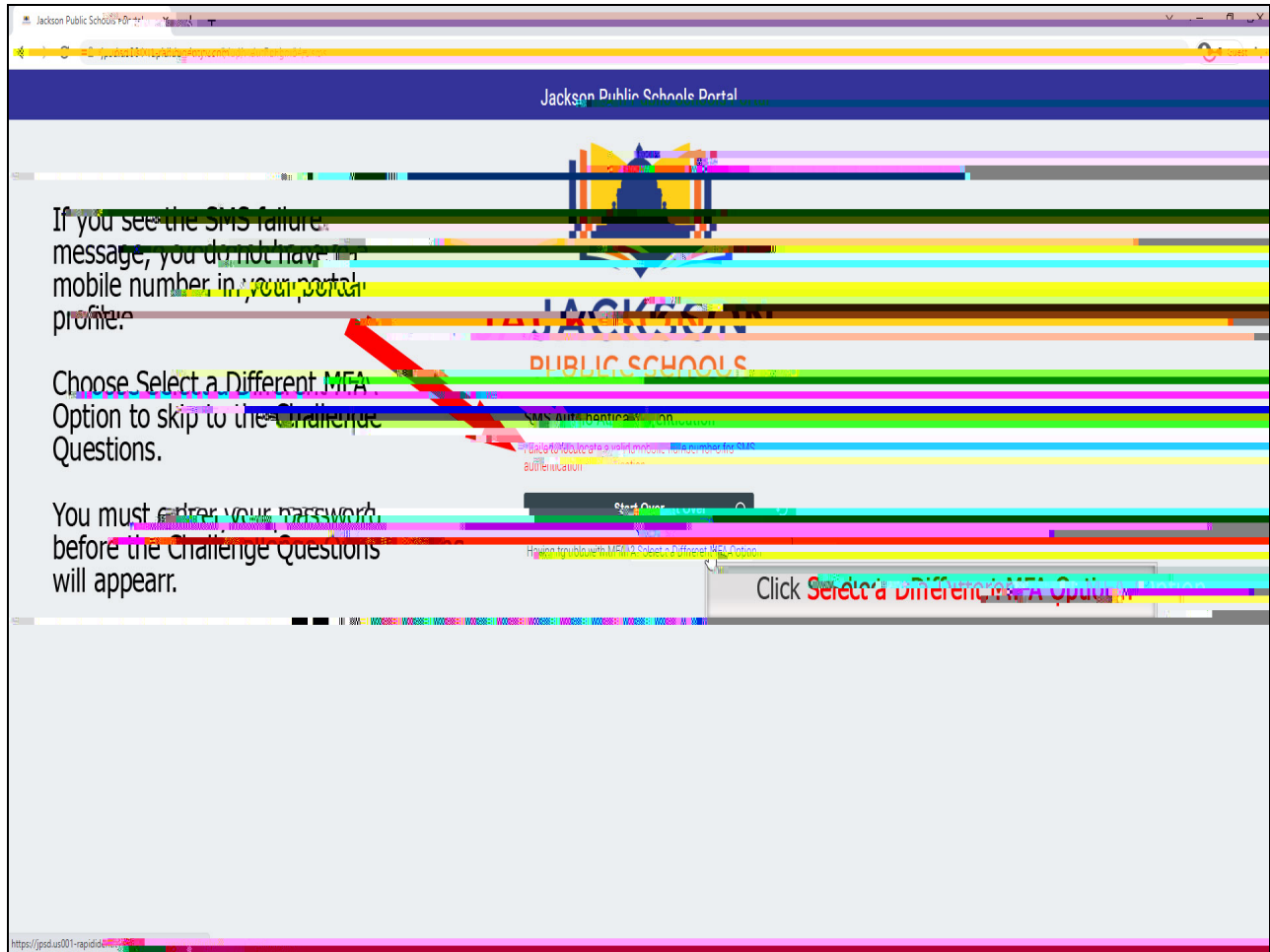


Slide 1 -



You will not be able to login until you claim your account!

Slide 4

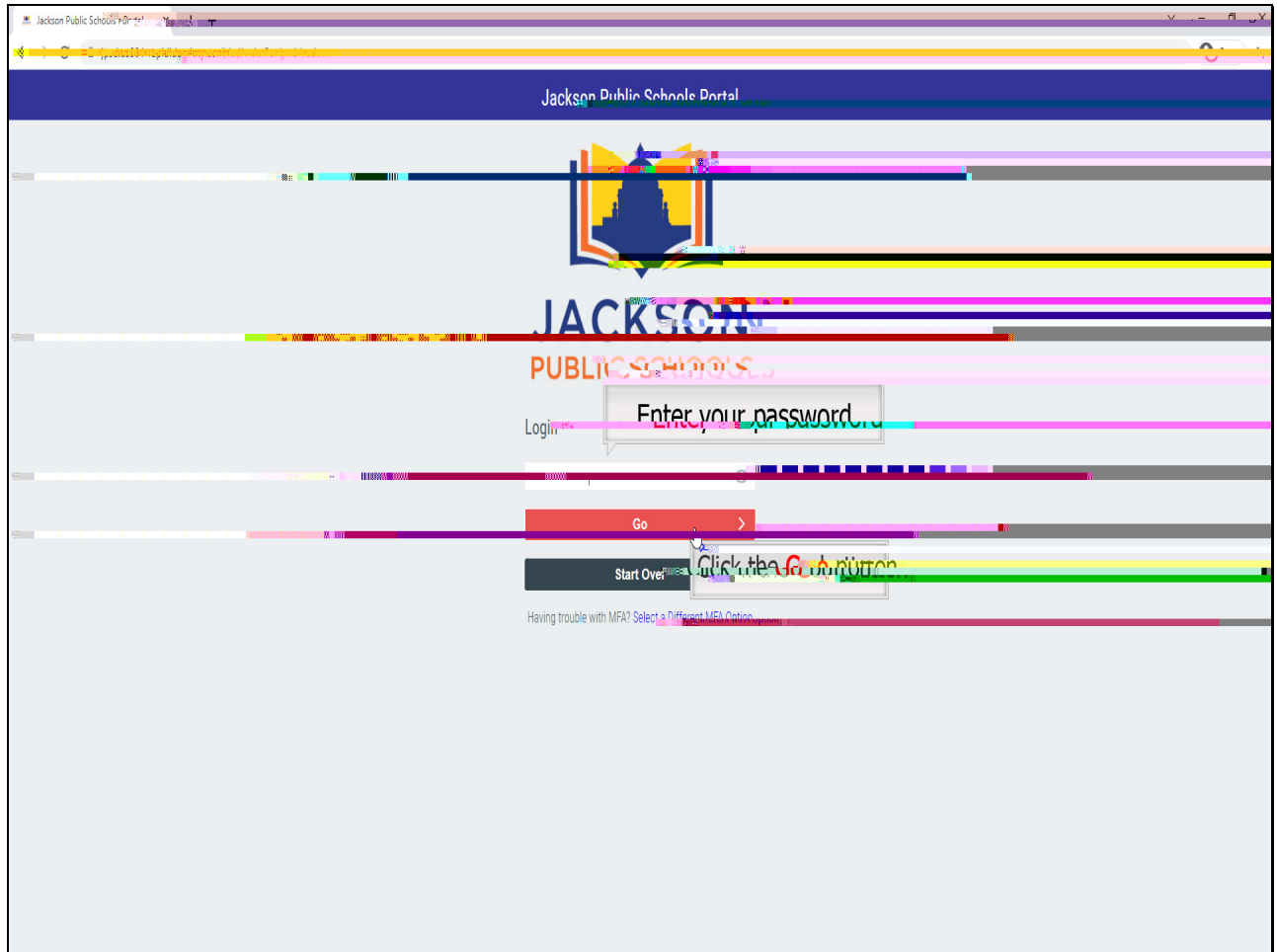


Click

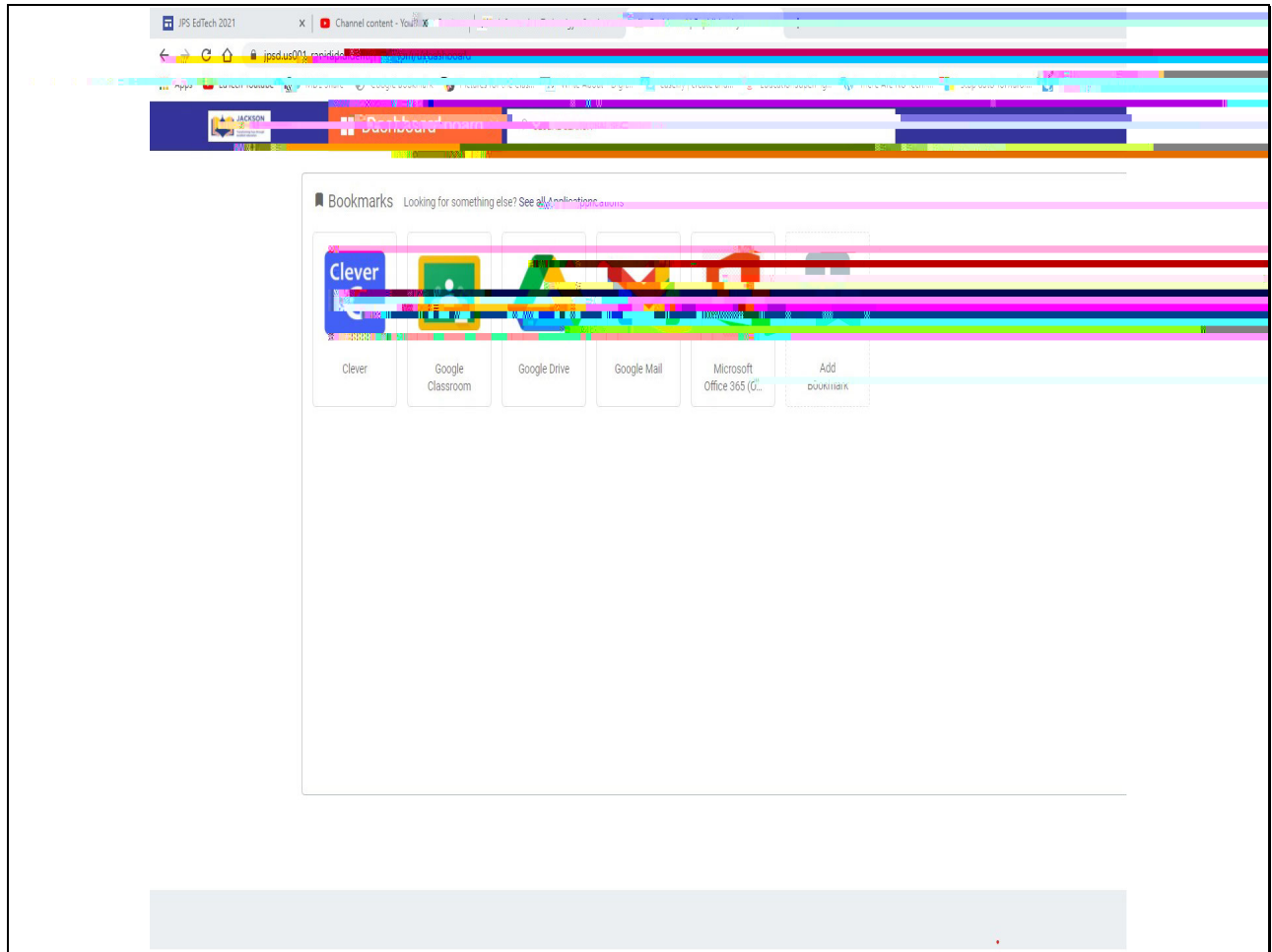
If you see the SMS failure message, you do not have a mobile number in your portal profile.

Choose Select a Different MFA Option to skip to the Challenge Questions. You must enter your password before the Challenge Questions will appear.


Slide 5



Slide 7



Slide 8 - Slide 8



Now you can add other MFA options to your account.

Click on your name and add SMS text, voice call, code, or add an authenticator app.

Challenge questions will be available as an additional option.

